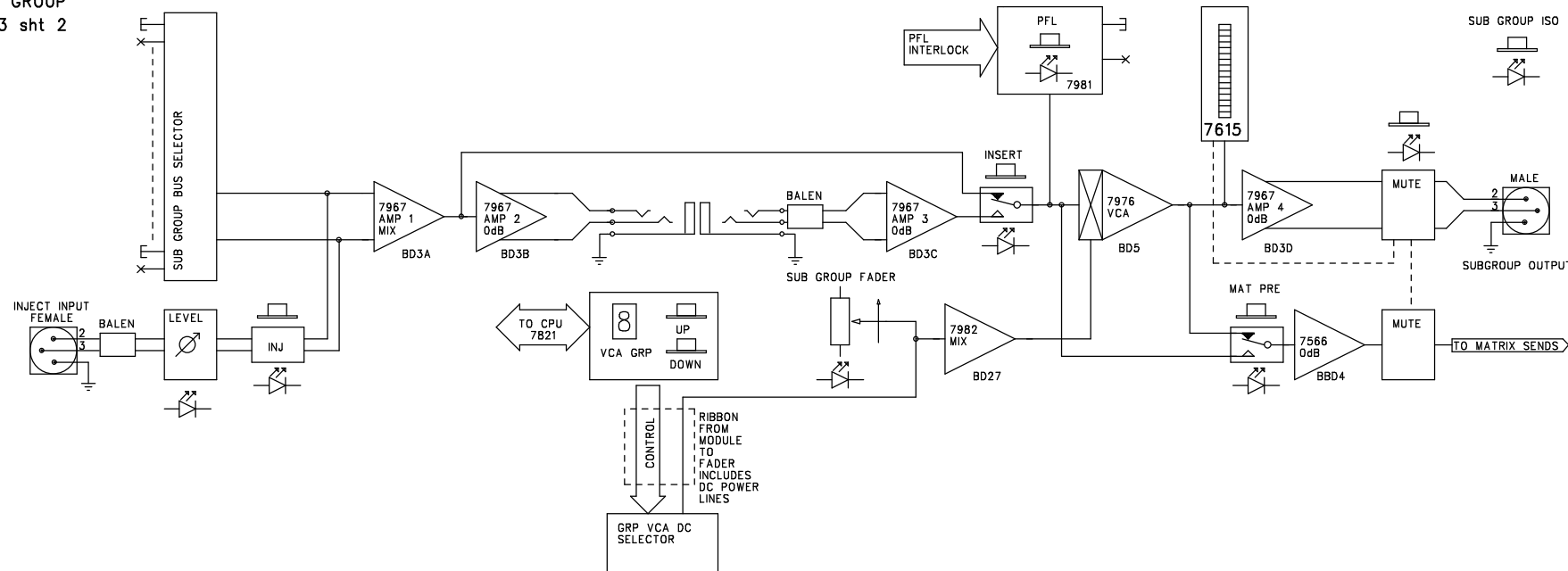
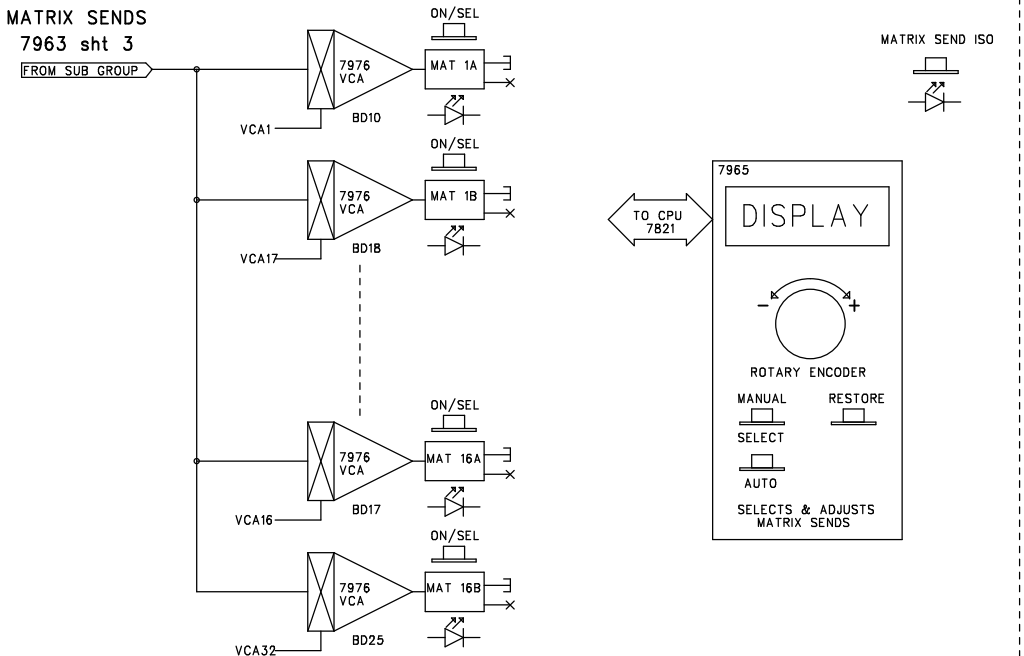


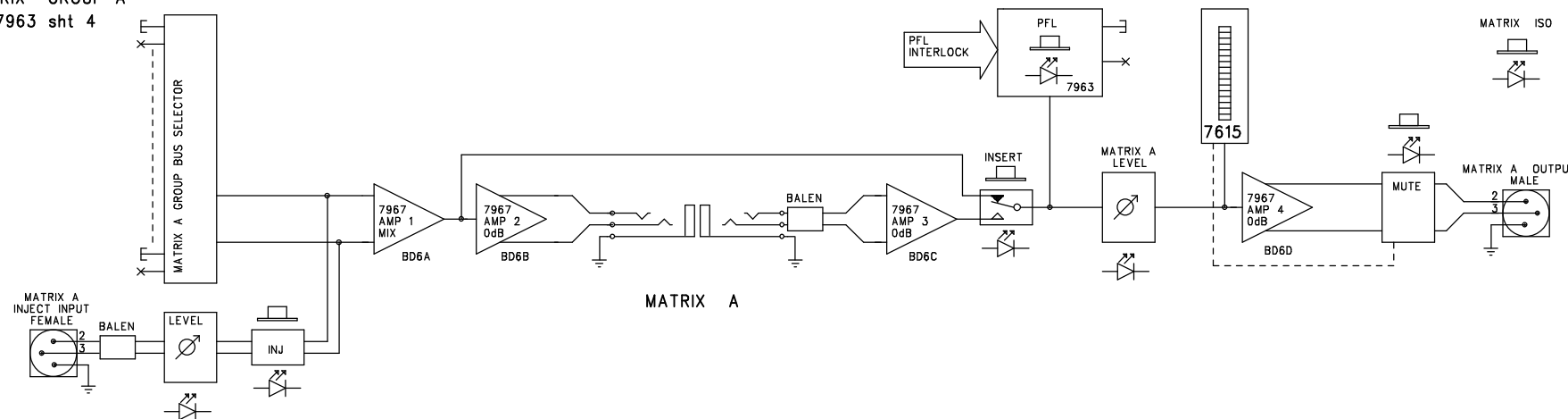
SUB GROUP
7963 sht 2



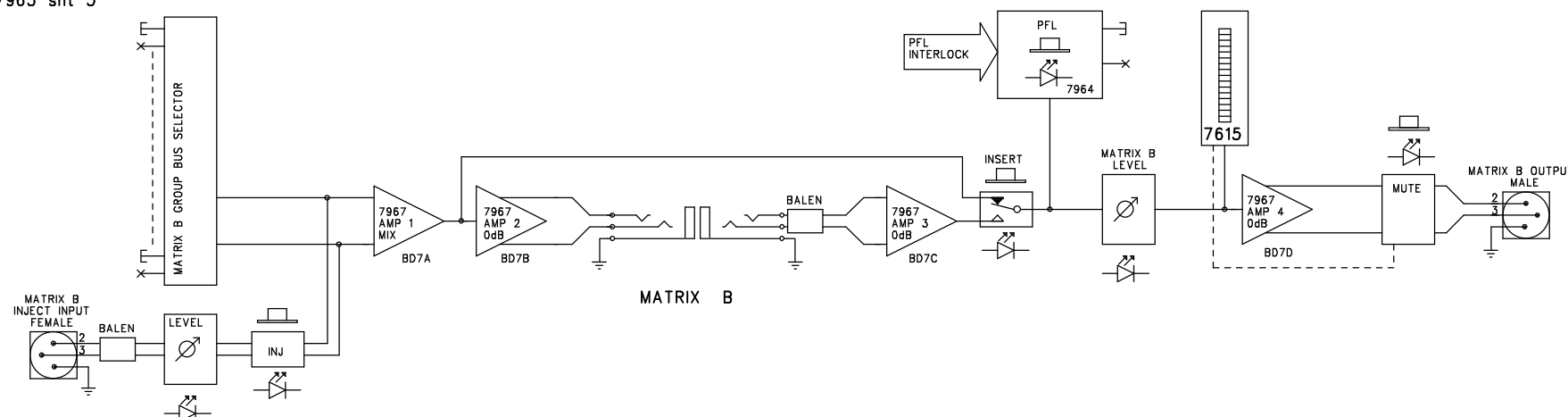
MATRIX SENDS
7963 sht 3



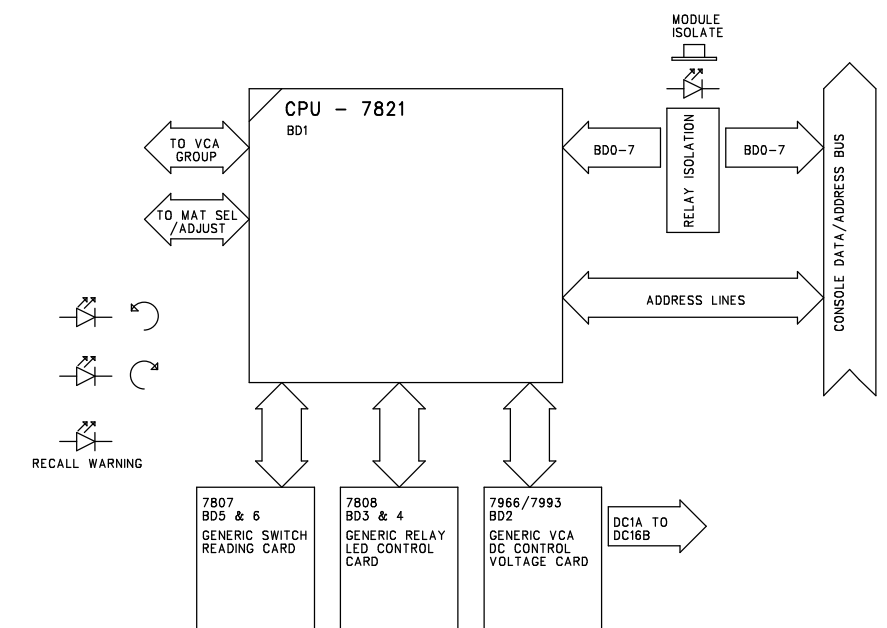
MATRIX GROUP A
7963 sht 4



MATRIX GROUP B
7963 sht 5



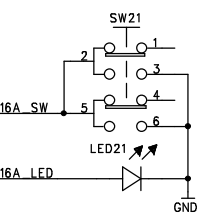
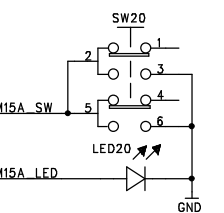
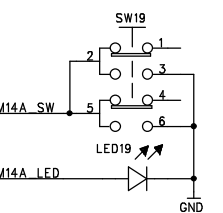
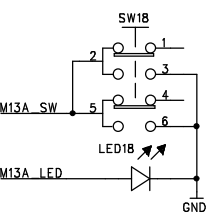
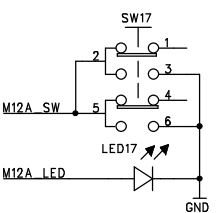
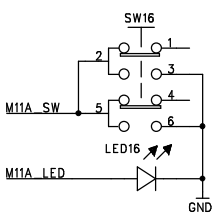
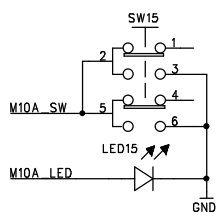
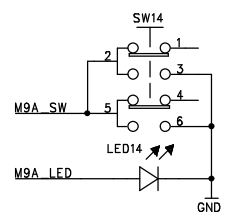
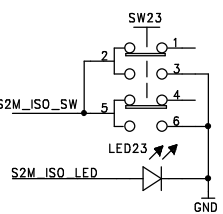
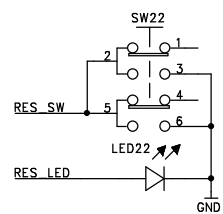
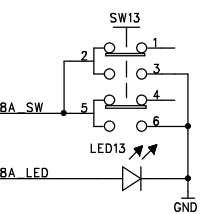
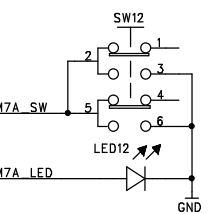
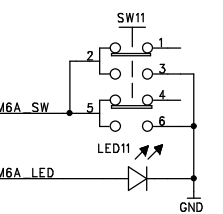
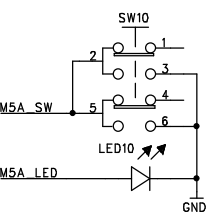
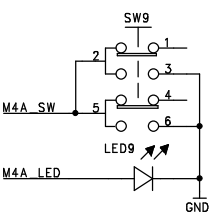
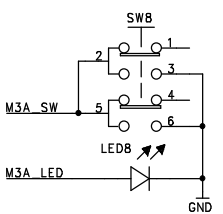
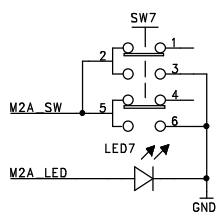
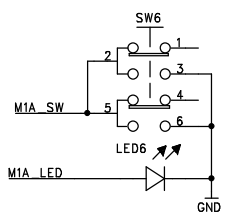
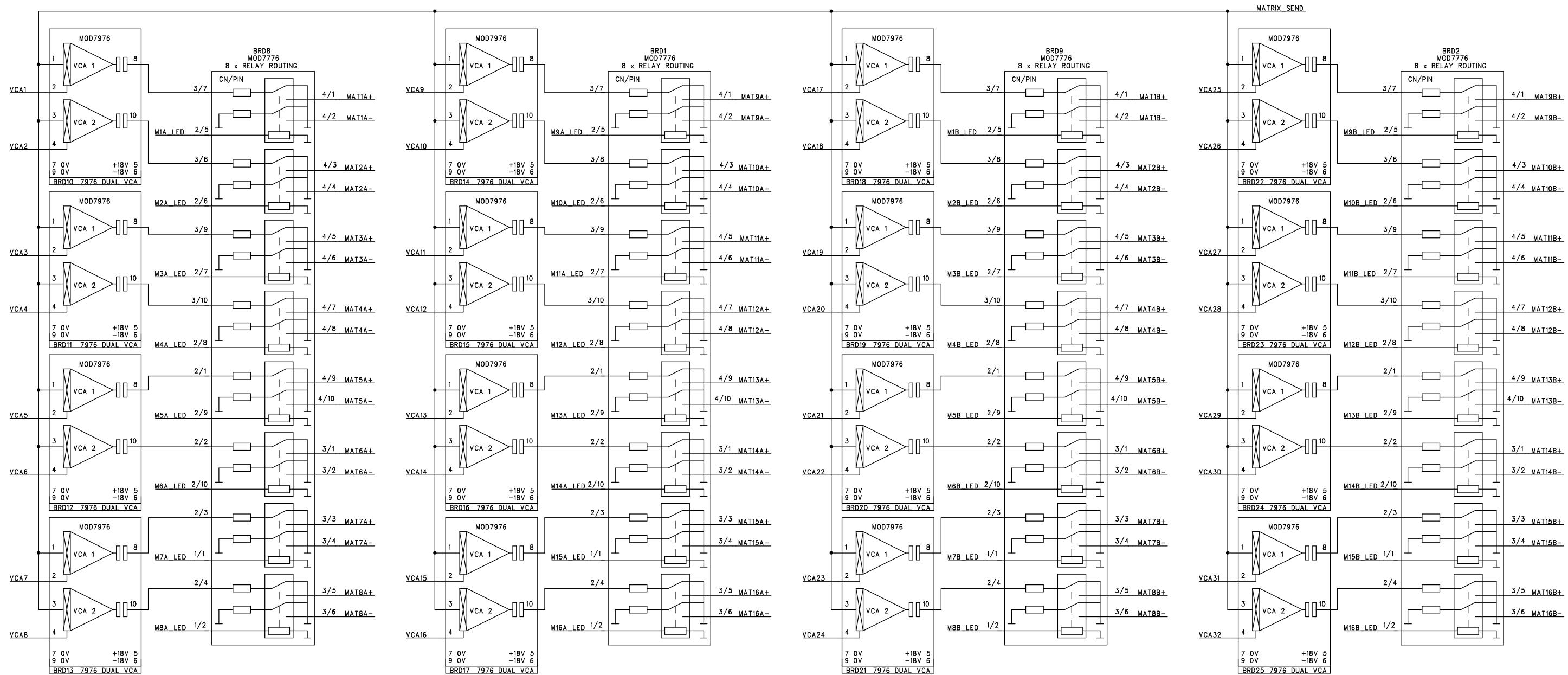
MODULE LOGIC



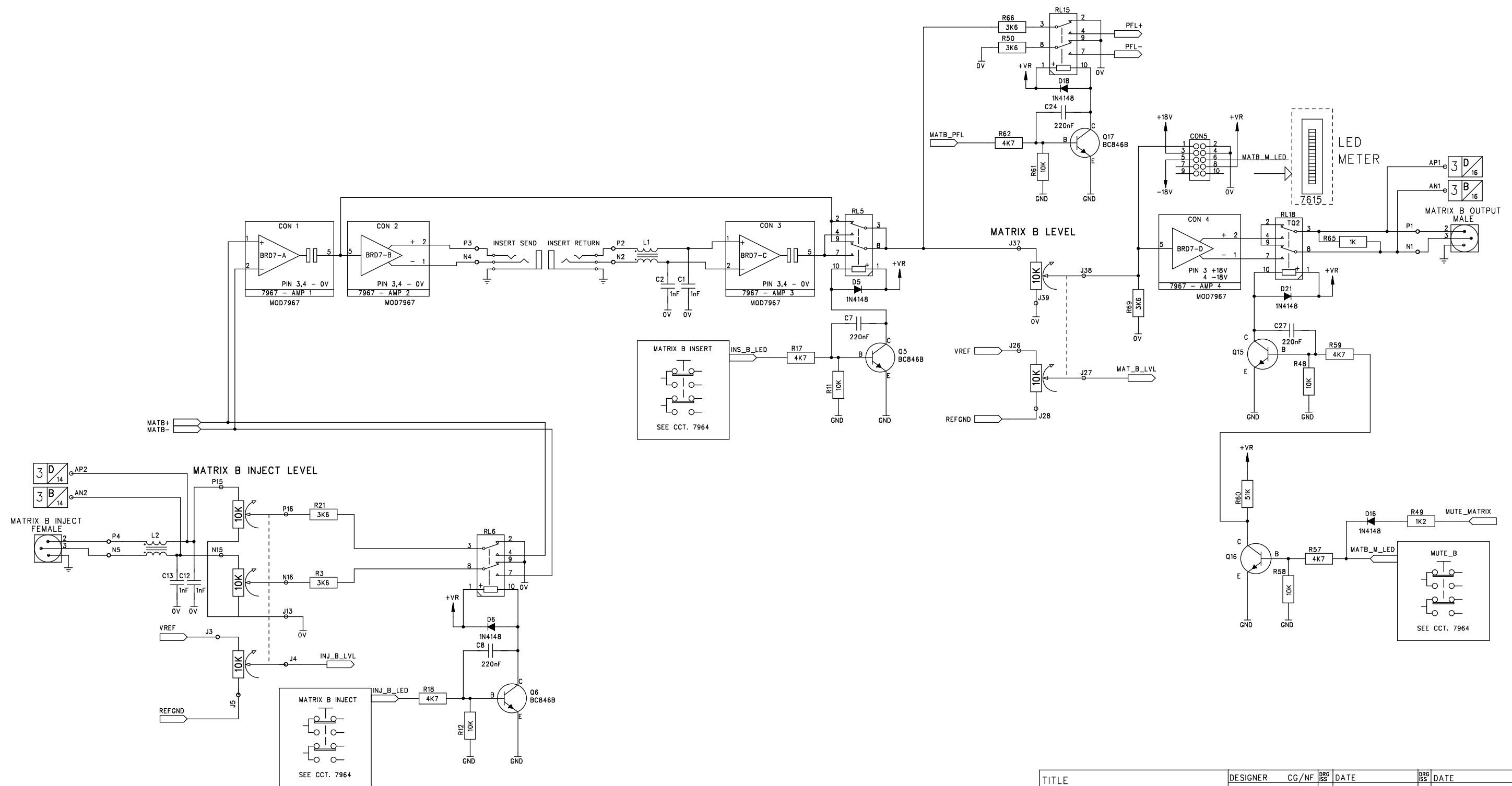
NOTE

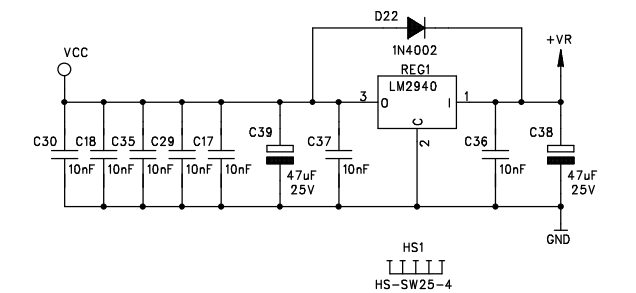
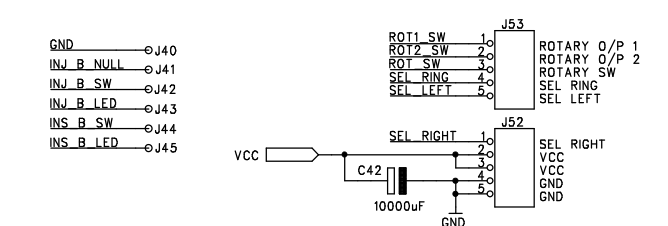
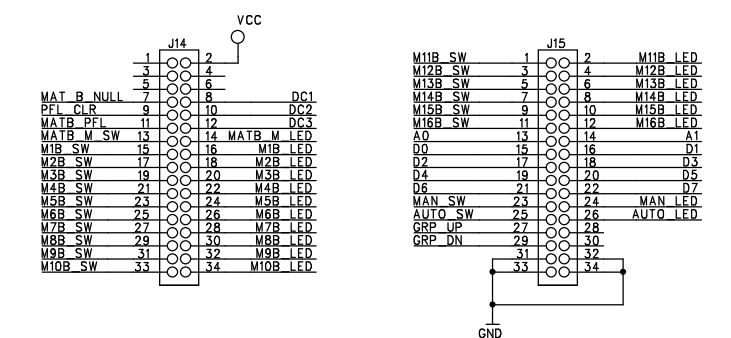
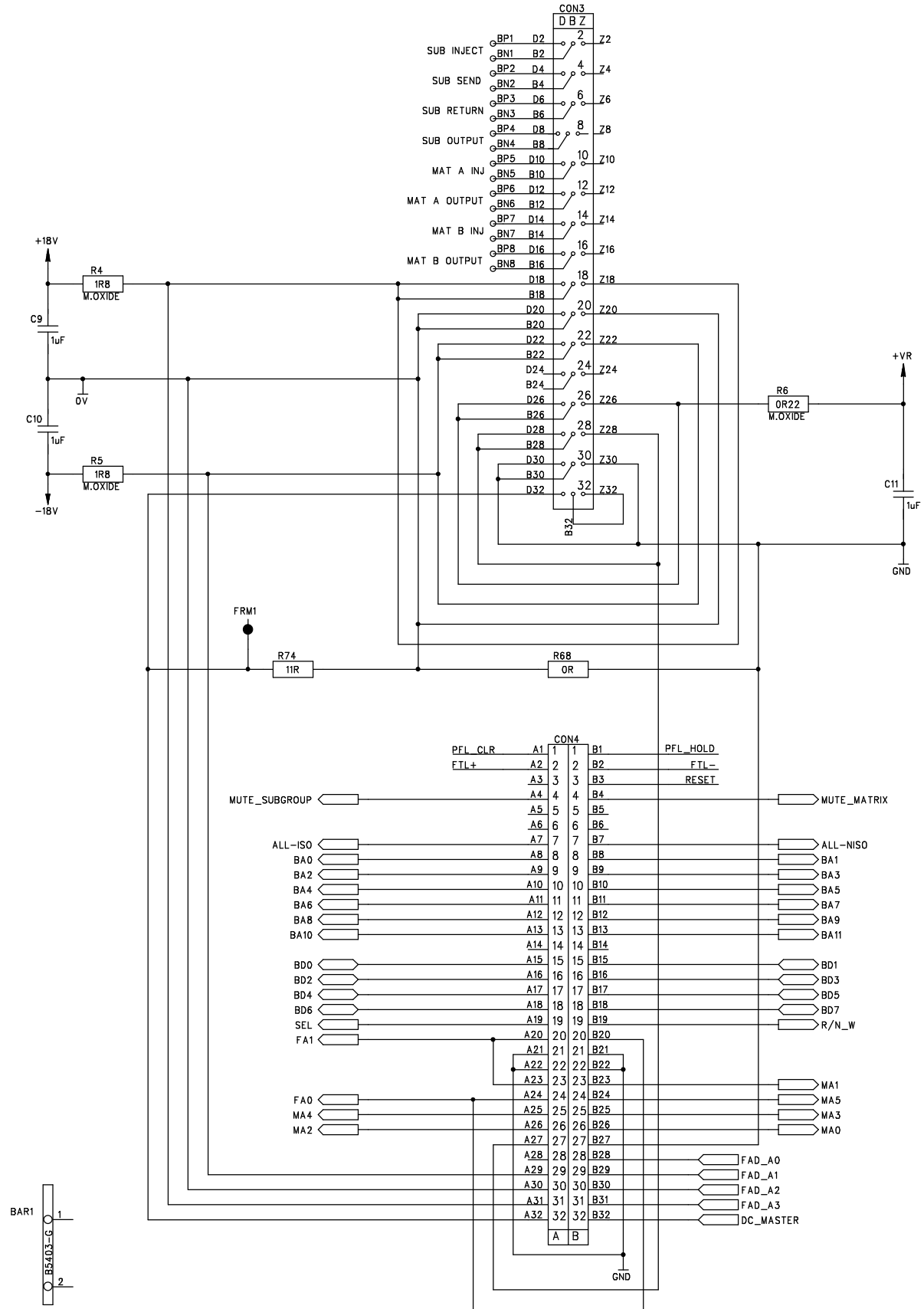
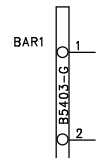
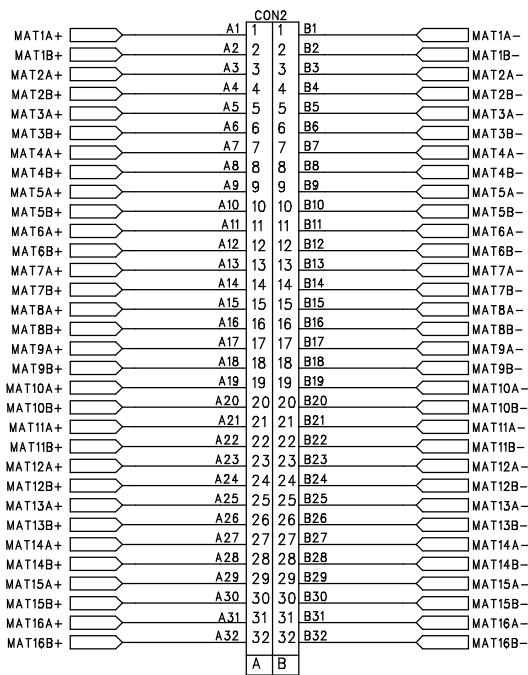
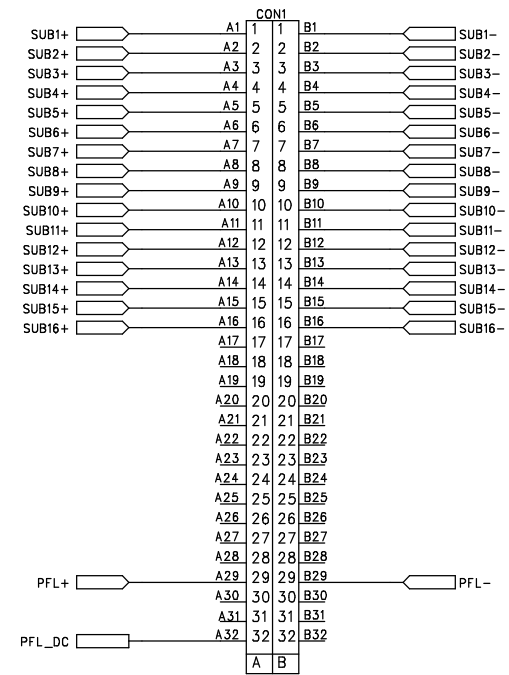
ALL SWITCHES WITH THE EXCEPTION OF MODULE ISOLATE
ARE READ BY THE 7807 GENERIC SWITCH READING CARDS
ALL LEDS/RELAYS WITH THE EXCEPTION OF MODULE ISOLATE
ARE CONTROLLED BY 7808 GENERIC RELAY/LED CARDS

TITLE	DESIGNER	CG/NF	DRG ISS	DATE	DRG ISS	DATE
PROG J-TYPE GROUP MODULE WITH FULL RECALL	DRAWN	NF	1	21.06.98	5	
	CHECKED	XX	2	31.07.98	6	
	APPROVED	XX	3		7	
	1st ISSUE		4		8	



TITLE		DESIGNER	CG/NF	DRG ISS	DATE	DRG ISS	DATE
PROG J-TYPE GROUP MODULE WITH FULL RECALL		DRAWN	NF	1	21.06.98	5	
		CHECKED	XX	2	31.07.98	6	
		APPROVED	XX	3		7	
		1st ISSUE		4		8	
© 1998 CADAC ELECTRONICS LTD		CADAC DRWG No. A2.7963				SHEET 3 OF 7	





TITLE PROG J-TYPE GROUP MODULE WITH FULL RECALL	DESIGNER	CG/NF	DRG SS	DATE	DRG SS	DATE
	DRAWN	NF	1	21.06.98	5	
	CHECKED	XX	2	31.07.98	6	
	APPROVED	XX	3		7	
	1st ISSUE		4		8	
CADAC DRWG No. A2.7963						SHEET 7 OF 7